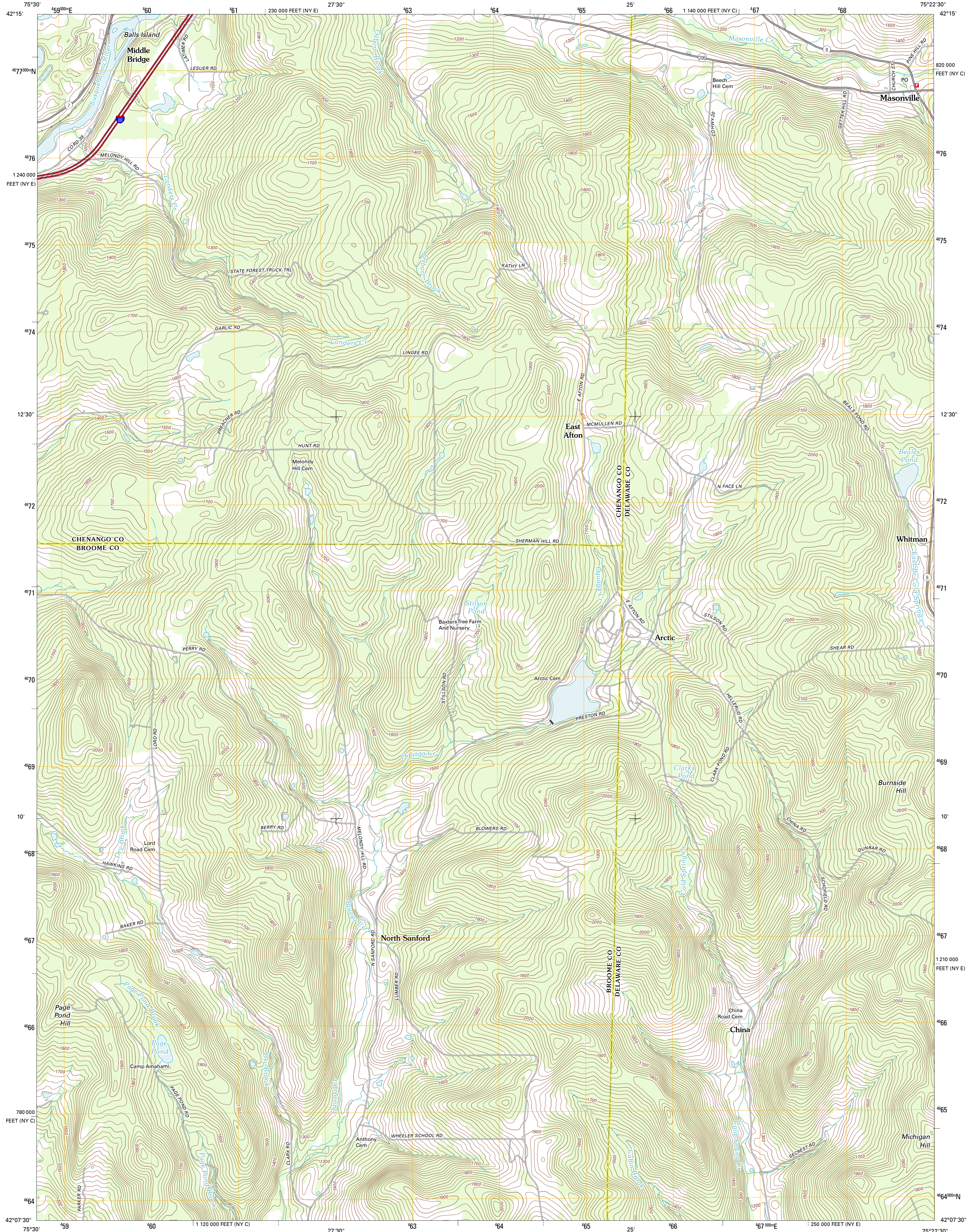




U.S. DEPARTMENT OF THE INTERIOR
U. S. GEOLOGICAL SURVEY

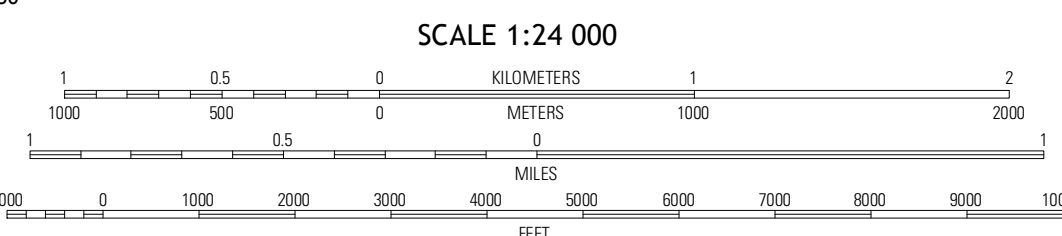
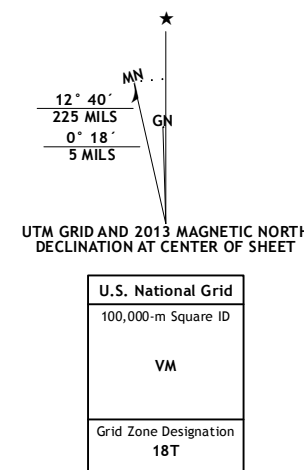


NORTH SANFORD QUADRANGLE
NEW YORK
7.5-MINUTE SERIES



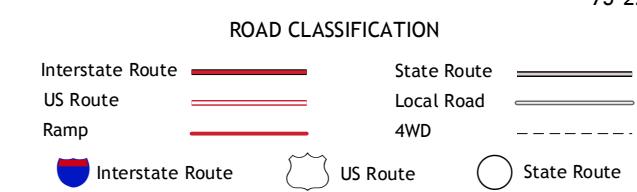
Produced by the United States Geological Survey
North American Datum of 1983 (NAD83)
World Geodetic System of 1984 (WGS84). Projection and
1,000-meter grid: Universal Transverse Mercator, Zone 18T
10,000-foot ticks: New York Coordinate System of 1983 (central
and east zones)

Imagery.....NAIP, July 2011
Roads.....©2006-2012 TomTom
Names.....©2006-2012 GNS, 2012
Hydrography.....National Hydrography Dataset, 2011
Contours.....National Elevation Dataset, 1999
Boundaries.....Census, IBW, IBC, USGS, 1972 - 2012



QUADRANGLE LOCATION

West Bainbridge	Silby	Unadilla
Afton	North Sanford	Trout Creek
Gulf Summit	Deposit	Cannonsville Reservoir



CONTOUR INTERVAL 20 FEET
NORTH AMERICAN VERTICAL DATUM OF 1988
This map was produced to conform with the
National Geospatial Program US Topo Product Standard, 2011.
A metadata file associated with this product is draft version 0.6.7

NORTH SANFORD, NY
2013

ADJOINING 7.5 QUADRANGLES