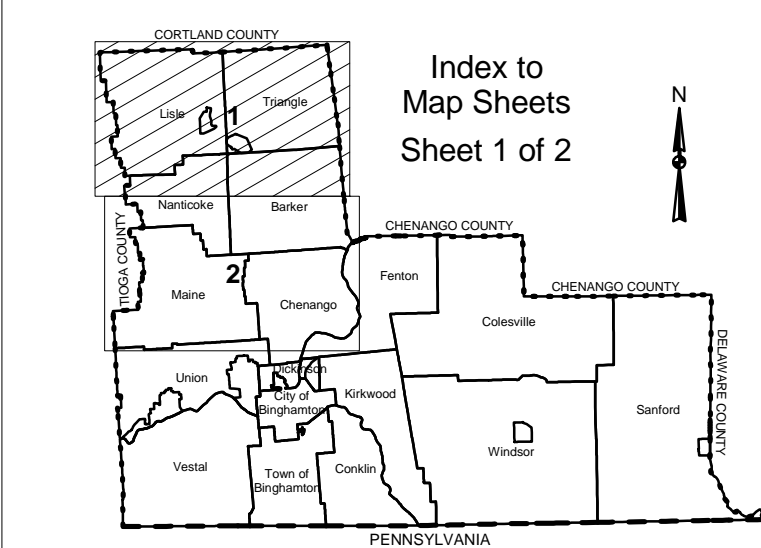


Broome County Agricultural District No. 5 January 11, 2003
Created January 11, 1979
Map Status: 8 year review
- modified

Including the Towns of: Barker,
Lisle, Maine, Nanticoke, Triangle

7.5' QUADRANGLES

Castle Creek, Chenango Forks,
Greene, Harford, Lisle, Maine,
Marathon, Smithville Flats,
Whitney Point, Willet



LEGEND

Boundaries	Roads
County Boundary	Water
Town Boundary	
Village Boundary	
Ag Parcels	

NAD 83
State Plane
New York Central
Feet

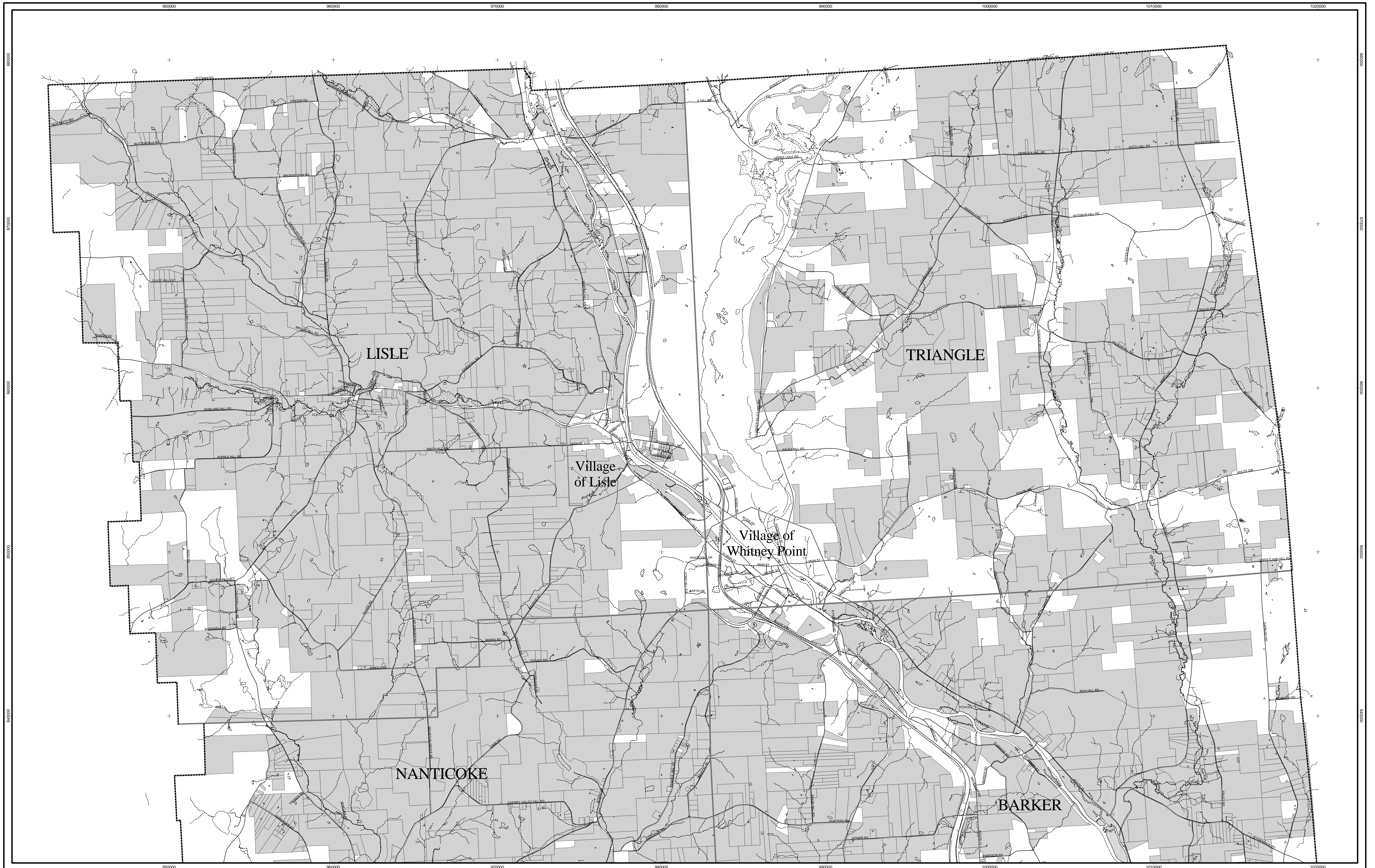
Scale:
1 : 24000

Tax parcel data were provided by the Broome County
Department of Real Property Tax Service in NYS Plane Central
NAD83 form, summer 2003.

Ag parcels were generated using assessor special district
codes as well as by manual entry from information provided
by Cornell Cooperative Extension.

Road line base file are from New York State Department
of Transportation files acquired at the NYS GIS Clearinghouse
and re-projected from UTM 18 NAD27 to NYS Plane Central
NAD83, summer 2000 with substantial editing of line geography
and attributes by the Broome County Planning Department.

Hydrology and municipal boundary line files were generated
from Broome County Real Property Tax Service CAD files
in NYS Plane Central NAD83 form, fall 2000.

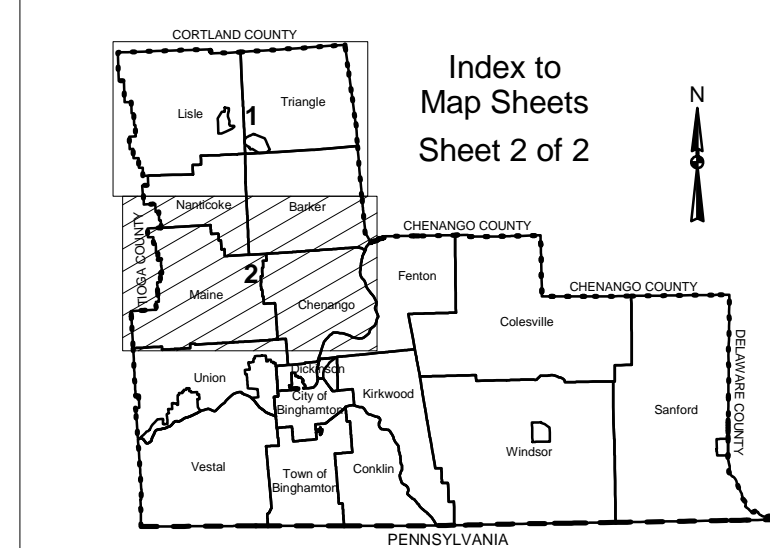


Broome County Agricultural District No. 5 January 11, 2003
 Created January 11, 1979
 Map Status: 8 year review
 - modified

Including the Towns of: Barker,
 Lisle, Maine, Nanticoke, Triangle

7.5' QUADRANGLES

Castle Creek, Chenango Forks,
 Greene, Harford, Lisle, Maine,
 Marathon, Smithville Flats,
 Whitney Point, Willet



LEGEND

Boundaries	Roads
County Boundary	Water
Town Boundary	
Village Boundary	
Ag Parcels	

NAD 83
 State Plane
 New York Central
 Feet

Scale:
 1 : 24000



Tax parcel data were provided by the Broome County Department of Real Property Tax Service in NYS Plane Central NAD83 form, summer 2003.

Ag parcels were generated using assessor special district codes as well as by manual entry from information provided by Cornell Cooperative Extension.

Road line base file are from New York State Department of Transportation files acquired at the NYS GIS Clearinghouse and re-projected from UTM 18 NAD27 to NYS Plane Central NAD83, summer 2000 with substantial editing of line geography and attributes by the Broome County Planning Department.

Hydrology and municipal boundary line files were generated from Broome County Real Property Tax Service CAD files in NYS Plane Central NAD83 form, fall 2000.

