

**Broome County Agricultural District No. 4**

Created June 24, 1976

Map Status: 8 year review - modified

Sheet # 1



**Legend**

- District 4
- District 4 - 8-Yr Review Additions
- District 4 - 8-Yr Review Deletions
- District 4 - Annual Additions
- District 3
- District 5
- District 5 - Annual Additions
- Not in an Ag District
- No Data

NAD 83  
State Plane  
New York Central  
Feet

1:24,000

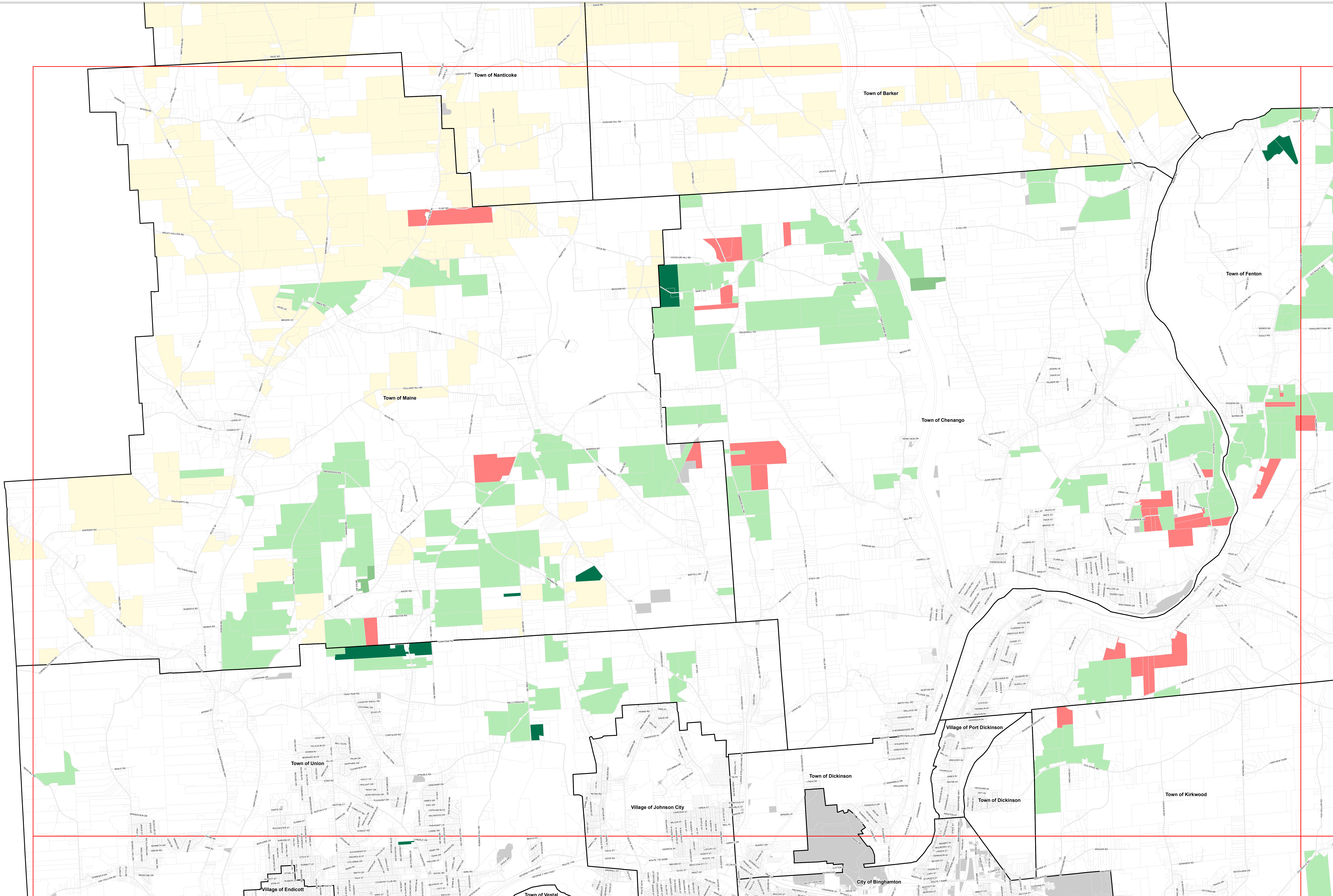
0 0.25 0.5 1  
Mile



Tax parcels derived from data provided by the Broome County Department of Real Property Tax Service, October, 2007.

Ag district parcels were generated using assessor special district codes as well as manual entry from information provided by Cornell Cooperative Extension.

Streets, water, and municipal boundaries from Broome County Planning.





**Broome County Agricultural District No. 4**

Created June 24, 1976

Map Status: 8 year  
review - modified

Including the Towns of:  
Binghamton, Chenango,  
Colesville, Conklin, Fenton,  
Kirkwood, Maine, Sanford,  
Union, and Windsor

7.5' QUADRANGLES:  
Afton, Belden, Binghamton East,  
Binghamton West, Castle Creek,  
Chenango Forks, Gulf Summit,  
Maine, Windsor

**Legend**

- District 4
- District 4 - 8-Yr Review Additions
- District 4 - 8-Yr Review Deletions
- District 4 - Annual Additions
- District 3
- District 5
- District 5 - Annual Additions
- Not in an Ag District
- No Data



NAD 83  
State Plane  
New York Central  
Feet

1:24,000

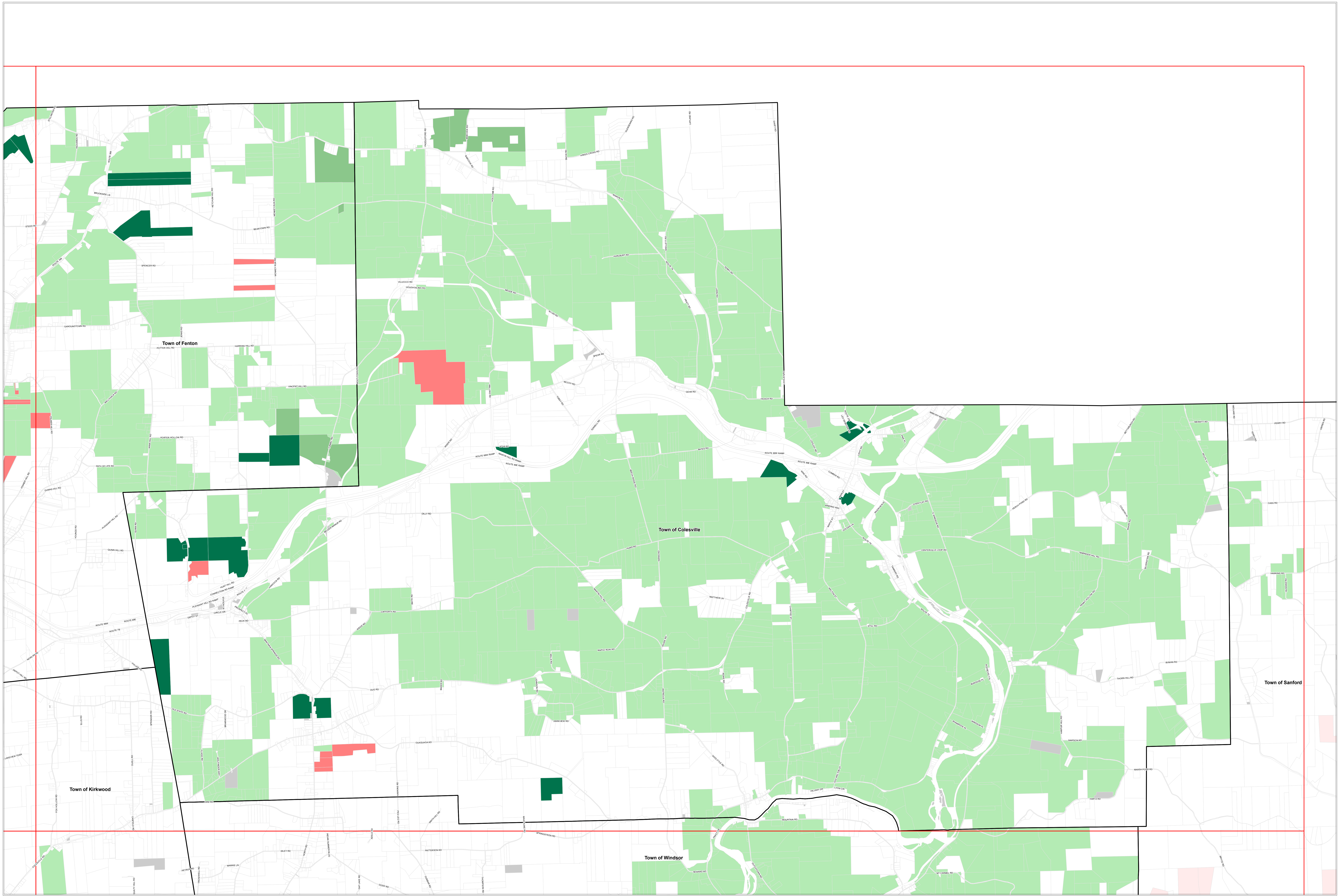
0 0.25 0.5 1  
Mile

Sheet # 2

Tax parcels derived from data provided by the Broome County Department of Real Property Tax Service, October, 2007.

Ag district parcels were generated using assessor special district codes as well as manual entry from information provided by Cornell Cooperative Extension.

Streets, water, and municipal boundaries from Broome County Planning.





**Broome County Agricultural District No. 4**

Created June 24, 1976

Map Status: 8 year  
review - modified

Including the Towns of:  
Binghamton, Chenango,  
Colesville, Conklin, Fenton,  
Kirkwood, Maine, Sanford,  
Union, and Windsor

7.5' QUADRANGLES:  
Afton, Belden, Binghamton East,  
Binghamton West, Castle Creek,  
Chenango Forks, Gulf Summit,  
Maine, Windsor

**Legend**

- District 4
- District 4 - 8-Yr Review Additions
- District 4 - 8-Yr Review Deletions
- District 4 - Annual Additions
- District 3
- District 5
- District 5 - Annual Additions
- Not in an Ag District
- No Data



NAD 83  
State Plane  
New York Central  
Feet

1:24,000

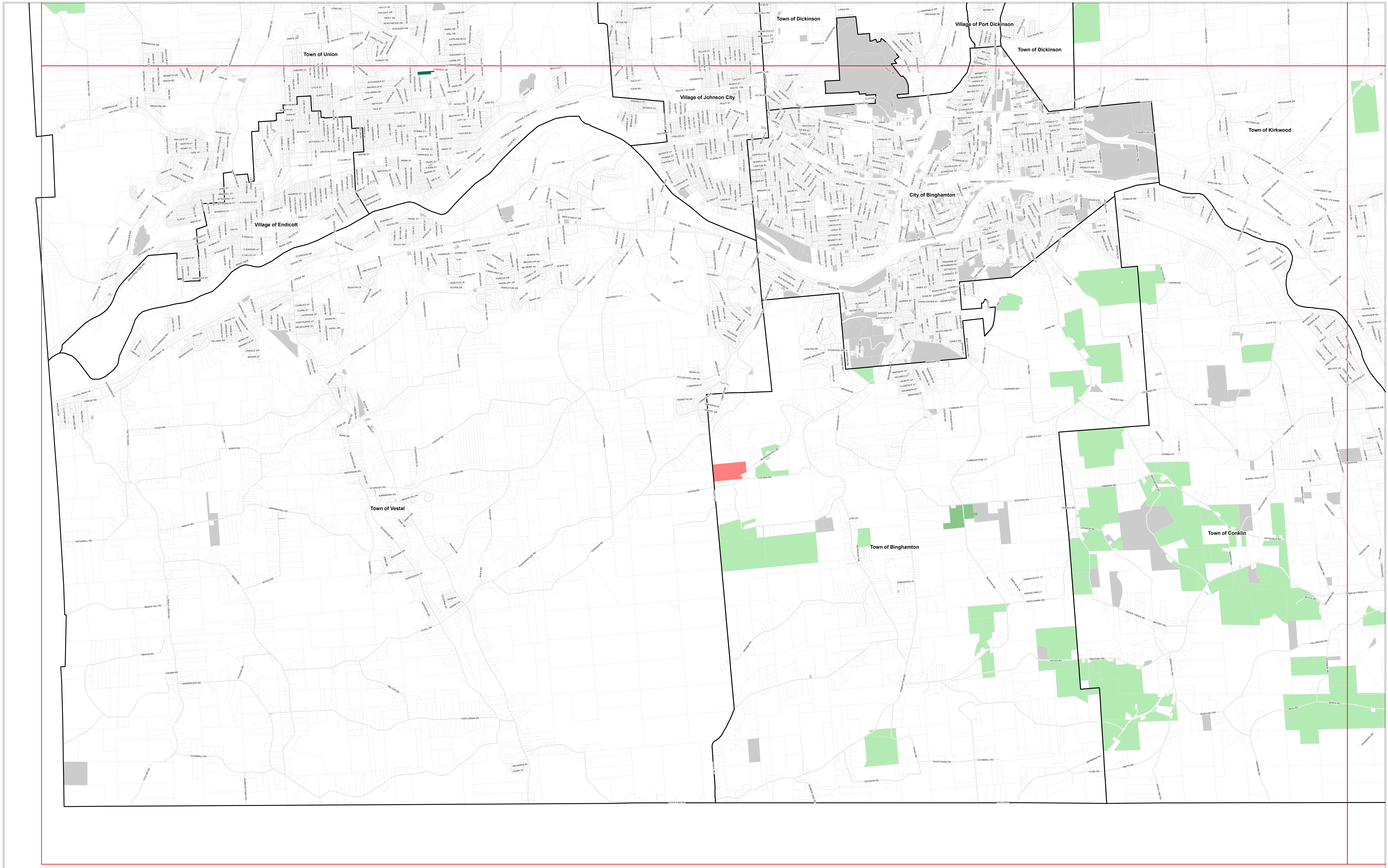
0 0.25 0.5 1  
Mile

Broome County, New York  
**GIS**  
www.bcgis.com  
March 20, 2008

Tax parcels derived from data provided by the Broome County Department of Real Property Tax Service, October, 2007.

Ag district parcels were generated using assessor special district codes as well as manual entry from information provided by Cornell Cooperative Extension.

Streets, water, and municipal boundaries from Broome County Planning.





**Broome County Agricultural District No. 4**

Created June 24, 1976

Map Status: 8 year  
review - modified

Sheet # 4

**Legend**

- District 4
- District 4 - 8-Yr Review Additions
- District 4 - 8-Yr Review Deletions
- District 4 - Annual Additions
- District 3
- District 5
- District 5 - Annual Additions
- Not in an Ag District
- No Data



NAD 83  
State Plane  
New York Central  
Feet

0 0.25 0.5 1  
Mile

1:24,000

Broome County, New York  
**GIS**  
www.bcgis.com  
March 20, 2008

Tax parcels derived from data provided by the Broome County Department of Real Property Tax Service, October, 2007.

Ag district parcels were generated using assessor special district codes as well as manual entry from information provided by Cornell Cooperative Extension.

Streets, water, and municipal boundaries from Broome County Planning.

